

The background features four hands, each holding a different colored puzzle piece (red, green, blue, and yellow) that fits together in the center. The hands are rendered in a simple, stylized manner with visible fingers and palms. The puzzle pieces are also stylized with interlocking shapes. The entire scene is set against a solid purple background.

Additional Learning Needs @ Brackla Primary School



This afternoon...

- I hope to share with you what you can expect from the school and the LA regarding ALN
- What is ALN?
- How we support pupils at Brackla

The new ALN Bill...what is it?



The biggest change for children who have learning needs - 2021 to 2025

- From Special Educational Needs/learning difficulties to **Additional Learning Needs**
- Bringing together all existing systems into a new, single system for ALN (no more statements, IAP's etc)
- The learners and families to be more involved - Families have crucial information that can help school's support children's learning and we welcome input from parents and carers
- A fair and transparent system with appeal process for any disagreements
- Graduated roll out system from 2021 to August 2025



Has my child got
ALN?



In the new ALN Act...

- The ALNET Wales Act 2018 (Part 2, Chapter 1) says:

A person has **(ALN)** if he or she has a learning difficulty or disability which calls for **additional learning provision. (ALP)**

- A child does *not* have ALN if their lack of progress or learning difficulties can be addressed through differentiated teaching of the kind that is usually available in schools, called **Universal Provision**

So...do they have a learning difficulty or disability AND do they need provision that is in addition to and different from other pupils?



What happens if
there is concern
my child may have
ALN?



What happens?

- **Person Centred Planning (PCP)** meeting will be held with anyone involved with your child to share information
- Decision will be made whether child has a learning need that can't be met with the Universal Provision at school
- An **Individual Development Plan (IDP)** will be developed involving the child where appropriate, with outcomes and shared
- Reviewed annually
- The new system intends to be transparent and parents/carers involved in the process. This should avoid disagreements but if they are not happy with decisions that have been made about their ALN or IDP by a school, they may request that the LA reviews or reconsiders it.

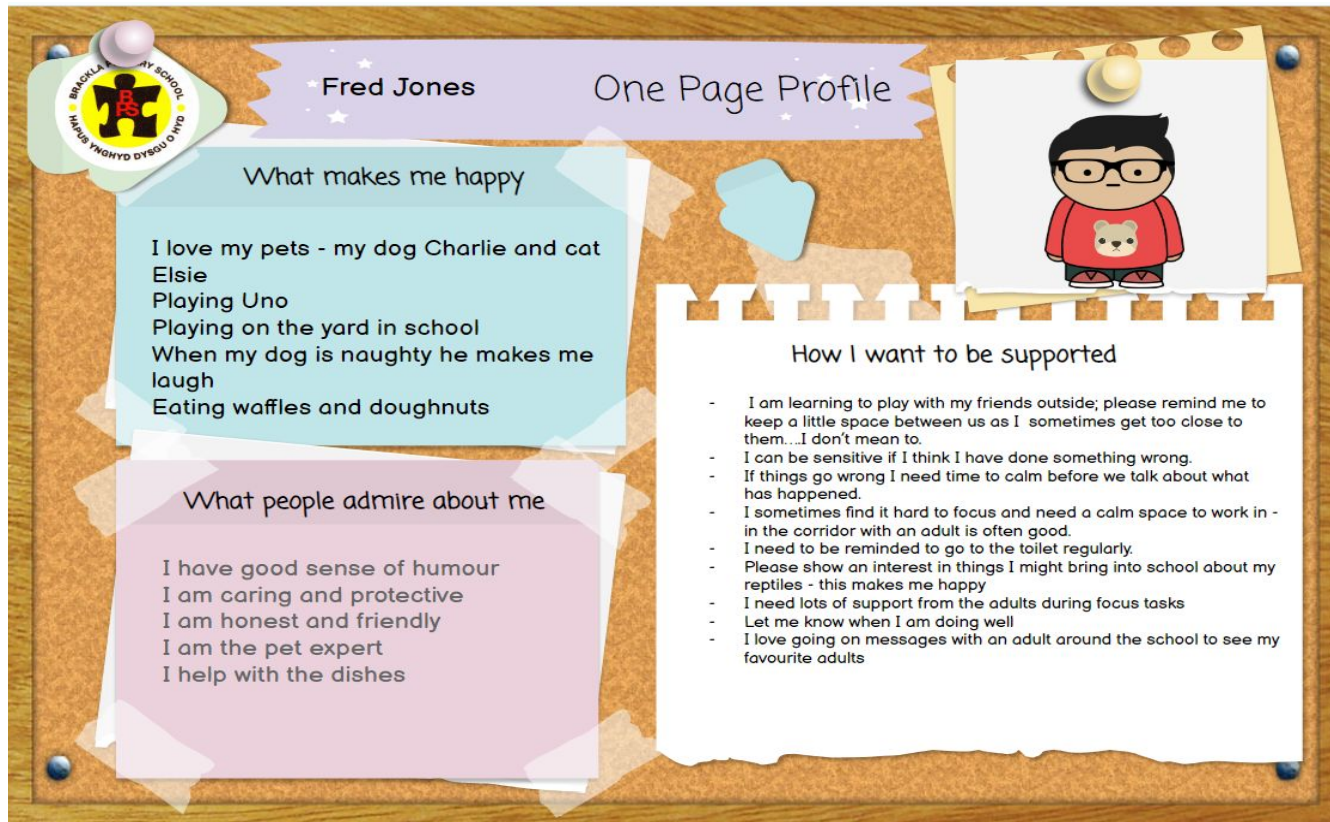


What is available at
Brackla to support
pupils?



Universal Provision at Brackla...

Every child has a **One Page Profile** outlining what support they may need, any approaches that help your child, do they need access any particular resources and any targeted support programmes they may be having to help with their needs.



Universal Provision at Brackla...

Wellbeing, Emotional and Social needs

- Outdoor learning for all pupils- supports areas of the curriculum as well as Wellbeing
- Thrive Time/Plans - a whole school approach to help children become more emotionally resilient and better placed to engage with life and learning. - individual support sessions, group work
- Barod - morning provision til 9:30 for any who may be anxious, upset, going through difficulties
- Starburst sessions - safe and Nurturing provision to help with wellbeing and relationships



Universal Provision at Brackla...

Literacy and Numeracy needs

- Differentiated work usually in groups
- Work is chunked , use of scaffolds, alphabet mats, extra thinking time, partner work, number lines, sentence starters, triangular pencils, reading rulers
- Use of technology to record or read text
- Higher level of in-class support
- Extra reading with an adult
- In Guided Group Reading (GGR) pupils may have different phonics/spellings
- DEST (Dyslexia Early Screening Test)
- LEXIA support



Universal Provision at Brackla...

Physical and sensory needs

- Hearing impaired - seating arrangements, aides, support from the HI team
- Visually impaired - support from VI services
- Gross/fine motor difficulties - fine motor activities like finger gym to strengthen the muscles in the fingers and Smart Moves programme which screens children and suggests support to develop gross motor skills



Universal Provision at Brackla...

Communication needs

- WellComm in Nursery
- Speech Links programmes for delivery of Sounds
- Language Links programmes in a group to help with understanding of language
- Behavioural or ASD support is bespoke to the child - reasonable adjustments e.g. ear defenders, timers, fidget toys, visual prompts, extra adult support, lunchtime provision,



Who supports the school?



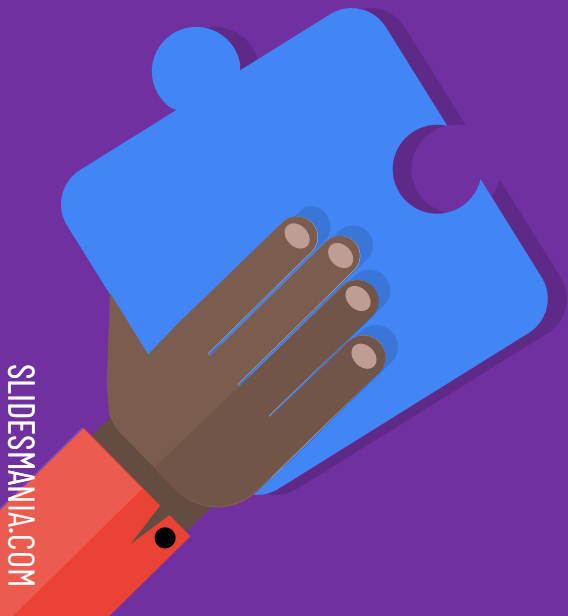


We can make referrals to:

- School Educational Psychology service
- Cognition & Learning
- Health visitors/school nurse
- Communications and Relationships (CART) team
- Speech therapists
- Occupational Therapists
- Mental health support (CAMHS)
- Early Help for support at home (disability team)



What should I do
if I have a
concern?





If you are concerned about any aspect of your child's development, talk with the class teacher. I am available to chat over any ALN needs you may have questions about.

Any questions?

Thank you!

